

Fool



****The Fool****- El Loco

Upright: Beginnings, innocence, spontaneity, a free spirit

Reversed: Holding back, recklessness, risk-taking, depending on others for answers

The Fool is a card of new beginnings, opportunity and potential. You are at the outset of your journey, and about to take your first step into the unknown. Even though you do not know exactly where you are going, you are being called to commit yourself and follow your heart. Now is a time when you need to trust where the Universe is taking you. As you venture out on this new journey, the Fool encourages you to have an open, curious mind. Leaving behind any fear, worry or doubts about what may or may not happen. This is about new experiences, personal growth, development, and adventure.

On the other hand, The Fool reversed suggests you may fear the unknown, wondering, 'What am I getting myself into?' This often shows you feel the need to control everything! Perhaps you are over thinking, to balance this out, you must trust in the universe, so you can take this step forward, have faith, even if you are unsure of what will happen next. The idea or illusion of "control" is quite foolish in its self.

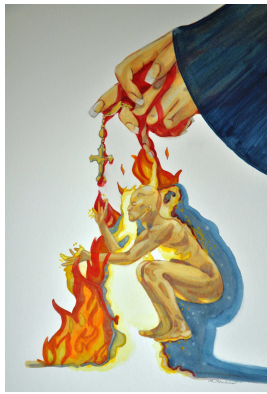
Or maybe the reversed Fool is showing that you are taking too many risks. Looking outside yourself for answers, instead of relying on your own intuition. Maybe you are even being led astray by another, which takes you farther away from your path and true self. When you realize this you feel "foolish" for being so easily tricked.

The Fool here is a kind of Mad Hatter driven mad by overthinking and self doubt. She represents that crazy, scattered feeling when you have been made 'The Fool' by another. Ignoring the warning signs of your instincts. Her crazy appearance, the messy hair, tear stained face, skewed cards splattered with blood (her heart), and the poison tea she is poring, as well as the Ouija board's "Good Bye", tells the story of her possible fate for not trusting herself and diving in head first.

Try to embrace the positive aspects of youth and hopefulness of this card, have faith in your self and the universe, while maintaining balance. Do not look toward others for answers. Trust yourself and listen to those gut instincts and do not be duped. Learn to listen to them. You are much wiser than you think!

The Fool resides in the house of Air

Magician



The Magician-El Mago

Upright: Manifestation, resourcefulness, power, inspired action
Reversed: Manipulation, poor planning, untapped talents

The Magician card is your conscious awareness of yourself as an individual. You are in a position to show what you can do. It's time to work your magic. You have gathered around you your supplies, your tools, your support, your inner potential. Now it's time to put all you gathered around you to work and see what happens. Cast your spell. The Magician card indicates an outgoing energy. It is the manifestation and cultivation of desires. You need to get out of your own way and let things flow.

The female hands and rosary beads indicate the role that intention, attention and belief serve in bringing your desires into form. What goal are you manifesting by concentrating your attention? The fire enveloping the Magician speaks to the energy needed to bring about this manifestation. The Magician's right hand is raised toward Heaven while his left hand is pointing down towards the Earth. This indicates the merging of the higher powers of grace, virtue, and light brought down and applied to earthly pursuits. The Magician suggests the possession and communication of the powers and gifts of the spirit-the divine motive in man, reflecting the spiritual realm. This card also signifies the unity of individual being on all planes. We are all on the same journey.

Dia de los Muertos is steeped in the tradition of Roman Catholicism which is the main religion in Mexico with 88% of the population. In fact, Mexico has the second highest population of Catholics in the world. At the end of the rosary dangles the Holy Cross-the sign of the Holy Spirit, the sign of eternal life. The rosary is made up of a chain of links in the shape of the infinity symbol, an endless cord. There is also blood entwined. The Magician is covered in fire with blood coming down from above. The blood symbolizes life force and the fire symbolizes the intention needed, the energy. The Magician hovers above the ground, a conduit between two worlds.

The air element card indicates a timely awareness that you have come into your power and gifts, now use them.

High Priestess



High Priestess-La Sacerdotisa

Upright: Intuition, sacred knowledge, divine feminine, the subconscious mind. Reversed: Secrets, disconnected from intuition, withdrawal and silence

The High Priestess card represents complete neutrality. She bears witness to all that's occurred to you and the human race without judgment. The receptivity of the priestess is your personal subconscious and the collective unconscious rolled into one. Does your subconscious reflect what your conscious mind pays attention to? This card represents an introspection, self-reflection, and an intuition. Are you focusing too much on logic and reasoning? Are you distracted by what you can see and not enough by what you feel? A lot of us tend to live by what makes sense to us. It is a way to move forward. It is a way to feel comfortable because we can see it, touch it, and make sense of it. This card is telling you to tap more into the unknown realms of life. The murky areas of feeling and sensing need to come to the forefront this time. Maybe you need to reevaluate something in your life from a different perspective. Bring out your imagination and intuition. Stop looking at the data and forcing an outcome. Trust your instincts and be patient with letting a situation play out on its own. The High Priestess card is an invitation to encourage room for the esoteric mysteries of perception. She is the keeper of how to access the beyond. Listen to her, your inner High Priestess, and you will gain new perspectives.

The High Priestess bears witness to all, as she stands in front of a pile of skulls from the dead of the past. She calls upon the element of air to bring forth knowledge. Her gown is covered with the bones of the living, the present. She wears her heart on her sleeve, as she does not turn away from the intelligence and honesty of emotion. A large sugar skull is behind her, reinforcing the Dia de los Muertos connection between the living and the dead.

This water element card can, in some respects, be considered the highest and holiest of the Greater Arcana. It calls upon you to trust your instincts.

Empress



The Empress - La Emperatriz Upright: Femininity, beauty, nature, nurturing, abundance Reversed: Creative block, dependence on others

The Empress card is both Mother Nature and the maternal, nurturing parts of you. The Empress is your creative imagination, the desire to create something, to nurture and nourish it along. She is also the Divine Mother. This card indicates you are on the precipice of a birth of some kind. You are in your potential and poised to follow through. The Empress card reveals a need for this follow through. What can you do to help yourself along, to bring about this new creation? Are you in touch with your heart's desire? How might you rekindle your creativity? How are you imagining your future? This card could indicate you need to protect this new birth: a new idea? A new opportunity? Perhaps you need to connect with Mother Nature more? The Empress hints at the germination of an idea before it is ready to be fully born. You have abundance in your responsibilities of life. Connect with the power of the feminine. Even if you do not feel abundant and ready to nourish, you are balanced. You are primed to take on more. The Empress card signifies the door or gate by which an entrance is obtained into this life. Walk through it.

The Empress card shows a female portrait in Dia de los Muertos paint. This image shows there is no question as to her nobility. She has an all-knowing, grand stance. Head tilted back ever so slightly and, of course, her thorny crown designates her royal position. This Earth element card is completely grounded and confident in her nourishment of herself and others. The twine around her index finger reveals that she has others always in mind. She is a caretaker. She knows how to coax any little thing to thrive. Her dress shows that she is aware of her femininity and blossoms in it.

Element: Air

Emperor



The Emperor-El Emperador Upright: Authority, establishment, structure, a father figure Domination, excessive control, lack of discipline, inflexibility

The Emperor card stands for order and power, the leader in you. The Emperor watches over, lovingly rules, and regulates. He is the observant part of you: reasonable, organized, disciplined. As the father figure of the Tarot deck, the Emperor card signifies world knowledge and expertise. He has a clear vision of creativity and organizes those around you to manifest your goal. He has a good feel for the overall plan and means of how to follow through. Pulling this card might signify that you need to be more reasonable or less pragmatic for your task at hand? Do you need to change your approach in order to get what you need? What needs overseeing or discipline in your life? The Emperor card tends to be a heavy or intense card. He is focused on structure and foundation. He wants to gain and keep power, achieve excellence. He doesn't do so with blinders on though. He is a wise leader and knows how to discern fairness. The Emperor is like a competent father, stern but fair and caring. This card shows up when it is either time for you to have confidence in your own leadership skills or perhaps to take steps to build your legacy. The Emperor takes the long view. He is not distracted by the present, small troubles. The Emperor card is an indication that perhaps you should be more career-minded or get a more long-view perspective. The Emperor does not think in projects. He thinks in long term goals and his overall place in the world. Are you getting bogged down in the details? Are you questioning your competency? Do you need more experience or are you steeped in experience and need to find your confidence? The Emperor card speaks to your reason and logic. You are the authority. You are the source of regulation and strength. Tap into your unyielding warrior power, though balance it with the wisdom of an experienced father.

The Mayan/Aztec warrior imagery of this card alludes to the ancient origins of the Dia de los Muertos celebration. The Emperor embodies these archaic, deeply rooted traditions. The Aztec eagle warriors were considered the bravest of the warriors because they took the most prisoners in battle. The eagle was a symbol of the Sun, and the warriors were considered soldiers of the Sun. This Fire element card is bold and intense. It indicates strength and determination. Use that fire within to show your enthusiasm, competitiveness, and absolute competency.



The Shaman-El Chaman

Upright: Spiritual wisdom, religious beliefs, conformity, tradition, institutions Reversed: Personal beliefs, freedom, challenging the status quo

The Shaman is a healer and considered to have a direct connection to the spirit world. It is thought that the Shaman can influence the spirits for good or bad outcomes. The community around a Shaman has complete confidence in her/him and so the Shaman card indicates an ask for inner guidance. You need to then be open to receiving this guidance. Be still and listen, hear the truth of your heart. Might it be worthwhile to put aside what you know and what you think you know? What truth are you seeking? Realize the ultimate teacher lives within you. The Shaman is a teacher of wisdom. He is a community leader, bestowing his blessing on people. The Shaman card calls us to be our highest selves. It's time to stand up and do what you innately know you need to do. Maybe this is to devote yourself to a cause or to find a community to be of service to. It's time for some selfless behavior. You are a natural leader who knows how to help people find their best selves as well. Use these gifts.

The Mayan holy man or Shaman has his face painted blue and is dressed in ritual garb. He is holding a ceremonial rattlesnake tail. The Mesoamerican mythic feathered serpent is referenced in this image-a half-man, half-serpent who came down to Earth to educate mankind. The Snake-god headdress represents a surge of life force. Snakes are mythically connected to water and act as a conduit between the spiritual world and mankind. Snakes can also symbolize the Earth. This Water element card indicates an easy permutation between the spiritual realm and the physical realm. Water is like a mirror and you need only to reflect yourself out into the world. Act as a conduit within your community. See your truth and this will help others to see theirs.

Lovers



The Lovers

Upright: Love, harmony, relationships, values alignment, choices Reversed: Self-love, disharmony, imbalance, misalignment of values

The Lovers card represents conscious connections and meaningful relationships. The arrival of this card in a Tarot reading shows that you have a beautiful, soul-honoring connection with a loved one. You may believe you have found your soulmate or life partner. While the Lovers card typically refers to a romantic tie, it can also represent a close friendship or family relationship where love, respect, and compassion flow. The Lovers is a card of open communication and raw honesty. Given that the man and woman are naked, they are both willing to be in their most vulnerable states and have learned to open their hearts to one another and share their truest feelings. In a reading, this card signifies that by communicating openly and honestly with those you care about, you will create a harmonious and fulfilling relationship built on trust and respect. At its heart, the Lovers is about choice—the choice about who you want to be in this lifetime and how you connect with others. To make good choices, you need to be clear about your personal beliefs and values, and stay true to them. These decisions will not always be easy. Now more than ever, you must choose love—love for yourself as well as love for others. Choose the best version of yourself.

The yin and yang design denote the male and female balance as well as the darkness and light balance. The colors and design re-enforce the two parts of a whole. Also, the whole should be taken into account. Self love is necessary for loving relationships, even if it means embracing the darkness, which is in all of us. The Lovers card encourages you to unify dual forces. You can bring together two parts that are seemingly in opposition to one another and create something that is whole, unified, and harmonious. In every choice, there is an equal amount of advantage and disadvantage, opportunity and challenge, positive and negative. When you accept these dualities, you build the unity from which love flows.

This Air element card indicates devotion, intention, healing, and mutability.

Chariot



The Chariot

Upright: Control, willpower, success, action, determination Reversed: Self-discipline, opposition, lack of direction

The Chariot is a card of willpower, determination, and strength. You have discovered how to make decisions in alignment with your values, and now you are taking action on those decisions. When The Chariot appears in a Tarot reading, take it as a sign of encouragement. You have set your objectives and are now channeling your inner power with a fierce dedication to bring these objectives to fruition. When you apply discipline and commitment to achieve your goals, you will succeed. The Chariot calls you to assert yourself and be courageous. Be bold in expressing your desires and laying down your boundaries. You need to have faith in yourself and know fundamentally who you are and what you stand for.

The charioteer is under the impression that she directs her life, but divinity has precedence over all. The black and white horses signify the charioteer must learn to view success and failure as two sides of the coin of self knowledge. Are you aware that you can only control your thoughts and reactions, not the situation or others? What are you moving towards or away from? The Mexican female figure is a typical yet modern Tarot image, wrapped in a red and orange cloth with skulls embedded on the horses' bridles and harnesses. These skulls are a small nod to Dia de los Muertos, as well that it looks like she is escaping from Hell. The Chariot card resides in the element of Water. The Chariot symbolizes the human body or "vessel" in which you travel through life. The Chariot is a sign you will be successful. Keep your focus and remain confident in your abilities. Use your willpower and self-discipline to concentrate on the task at hand. See this endeavor as a test of your strength and conviction.

Strength



Strength

Upright: Strength, courage, persuasion, influence, compassion Reversed: Inner strength, self-doubt, low energy, raw emotion

The Strength card represents strength, determination, and power-like The Chariot but with a twist. While The Chariot signifies outer strength and will, the Strength card speaks to the inner strength of the human spirit's ability to overcome any obstacle. When the Strength Tarot card appears in a reading, you are fueled by your inner strength, personal power, strong will, and determination. Your strength gives you the confidence to overcome any growing fears, challenges, or doubts. The Strength card urges you to tame your animal instincts, gut reactions, and raw emotions, and to channel these initial responses constructively.

The Chariot has a typical, yet modern Tarot image. The woman looks calm and gentle, yet dominant over the lion. Fuerza: Strength suggests what it takes to embrace yourself fully. Everyone has a "beast" within them. Acknowledging or owning these parts of yourself makes you a complete person. But you can't let the beast run wild. The mature part of you should lovingly, yet firmly guide it. It's normal for feelings such as anger, rage, sadness, guilt, or shame to arise in certain situations. It's what you do with these emotions that makes all the difference. Now is a time when you need to be conscious of your instinctual urges and bring them into balance with the greater good. Approach your situation from a place of forgiveness, love and compassion.

The Chariot card resides in the element of Fire.

Hermit



The Hermit

Upright: Soul-searching, introspection, being alone, inner guidance Reversed: Isolation, loneliness, withdrawal

The Hermit shows that you are taking a break from everyday life to draw your energy and attention inward and find the answers you seek, deep within your soul. You realize that your most profound sense of truth and knowledge is within yourself and not in the distractions of the outside world. You are on a journey of self-discovery, led only by your inner wisdom and guiding light. The Hermit invites you to retreat into your private world and experience a deep sense of seclusion and introspection. You know that you need to take this journey alone. The Hermit often appears when you are at a pivotal point in your life and considering a new direction. Through meditation, contemplation, and self-examination, you may begin to re-evaluate your personal goals and change your overall course. You will look at your life with a deeper, more spiritual understanding. The Hermit also represents the desire to turn away from a materialistic society to focus on your inner world.

Looking for answers, this is equal blend of dia portrait and typical but modern tarot image. The female hermit is donning the ceremonial roses in her hair as well as the painted Dia de los Muertos face. You can see the typical lantern (light = knowledge) she holds and her posture suggesting of her solitary and protective nature. She holds a lantern in her conscious hand, suggesting that she's cognizant of being a bearer of the light of wisdom and understanding in the darkness of confusion and ignorance. Her presence indicates, help, if sought is always available. "Light at the end of a dark tunnel."

Elemental Earth

Fortune



Fortune

Upright: Good luck, karma, life cycles, destiny, a turning point
Reversed: Bad luck, resistance to change, breaking cycles

The Fortune card reminds you that the wheel is always turning and life is in a state of constant change. If you're going through a difficult time, rest assured that it will get better from here. Good luck and good fortune will make their return in time. The Fortune card is also known as The Wheel of Karma and reminds you that what goes around comes around. Be a kind and loving person to others and they'll be kind and loving to you. What you send out into the Universe will come back your way. The Fortune card asks you to be optimistic and have faith that the Universe will take care of your situation in the best way possible. Keep your mind open to all kinds of synchronicities and signs from the Universe. The magic of fate and destiny is behind you, and miracles are happening. Finally, the Fortune card can show a critical turning point in your life. Opportunities you could never imagine are suddenly available to you, and you have the chance to make a significant change in your life. See this as an invitation to turn things around and take an entirely new direction in your life. The more you tune in to your intuition and allow the Universe to guide you, the better the outcomes will be.

The skull decorated in Dia de los Muertos red roses with gold coins shows both the good fortune of what success and money can bring as well as the burden, or dark side, that can come with wealth or fame. Life's ups and downs bring the potential of understanding one's self more fully. Choose calm in the midst of chaos. How will success be measured: by the money in your wallet or happiness in your heart?

Elemental: Fire.

Justice



Justice

Upright: Justice, fairness, truth, cause and effect, law Reversed: Unfairness, lack of accountability, dishonesty

The Justice card represents justice, fairness, truth, and the law. You are being called to account for your actions and will be judged accordingly. If you have acted in alignment with your Higher Self and for the greater good of others, you have nothing to worry about. However if you haven't, you will be called out and made to own up to your actions. Be ready to take responsibility for your actions and stand accountable for the ensuing consequences. If you seek justice, then the Justice card is a positive sign that it will indeed be served. The Justice card often appears when you need to make an important choice with the potential for long-term repercussions. Be aware of the impact your decisions will have on your well-being and the well-being of others. Choose consciously by connecting with your inner guidance system (your intuition) and asking for the answer that is most in alignment with the highest good of all. At its core, Justice is about the search for truth. As you explore your truth, you will discover that things are not as clear-cut as you had thought. Be prepared to dip into the murky waters and explore what truth means to you. Be consciously aware of what you believe to be true and what you believe to be fair and ethical.

In this image, she is looking inward, thoughtfully weighing out her actions before proceeding. The scales are the universal sign of justice prevailing. "There is a higher court than courts of Justice and that is the court of Conscience." Justice weighs out or calculates the possible results of her actions before taking them. After deciding that she's willing to take responsibility for what might ensue, she acts with the faith that her chosen course of action will balance out in time.

Elemental: Air.

Hangman



Hanged Man

Upright: Pause, surrender, letting go, new perspectives Reversed: Delays, resistance, stalling, indecision

The Hanged Man reminds you that sometimes you have to put everything on hold before you can take the next step. The Hanged Man calls you to release the old mental models and behavioral patterns that no longer serve you. When the Hanged Man appears in a Tarot reading, your projects and activities may be coming to an unexpected and abrupt halt. Don't keep pushing forward, hoping that more force will drive you to where you want to go. Instead, surrender to the opportunity to pause and view it as your chance to reassess and re-evaluate where you are on your path. The Hanged Man is your invitation to welcome these pauses with open arms and surrender to the 'what is'-even if it's different from what you expected. Take time away from your routine to connect with a new way of thinking and seeing. This is the Universe's way of helping you see new perspectives and preparing you for the next leveling up that is happening in your life. Don't push or resist, instead allow the opportunities to flow smoothly and effortlessly to you.

The Hanged Man here is female. Her white hair indicates she has passed through wisdom's door. She hangs from a dead tree branch, wearing a skull bodysuit that entwines with her hair and masks her face. She is surrounded by black leaves that have taken on the form of crows, often associated with death. The hanged "man" has stepped out of ordinary time and into eternal time. Despite being tied, the hanged "man" hangs freely, suggesting a more open attitude towards life restrictions. The feet positioning indicate our true roots. What sacrifices are you making? Do you need to honor yourself by doing something unconventional? What truth are you surrendering to?

Elemental: Water.

Death



Death

Upright: Endings, change, transformation, transition Reversed: Resistance to change, personal transformation, inner purging

The Death card is the most feared and misunderstood of all the cards in the Tarot deck. In reality, the Death card can be one of the most positive cards. After a period of pause and reflection with the Hanged Man, the Death card symbolizes the end of a major phase or aspect of your life that you realize is no longer serving you—opening up the possibility of something far more valuable and essential. You must close one door to open another. You need to put the past behind you and be ready to embrace new opportunities and possibilities. Similarly, Death shows a time of significant transformation, change, and transition. You need to transform yourself and clear away the old to bring in the new. Any change should be welcomed as a positive, cleansing, transformational force in your life. Finally, Death is a sign that you need to learn to let go of unhealthy attachments in your life to pave the way to a fuller, more fulfilled life of deeper meaning and significance. See this as a time to cut out excess and let go of what is unnecessary in your life. Purge the old belongings, memories, and baggage that are getting in your way.

Death is seen as a skeleton, carelessly blowing bubbles and accepting of fate. Death is as much a part of the life cycle as the sun's rising and setting. Water symbolizes death as being a cycle and a natural part of life. All of us face our immortality at some point. The Death card has elements of a sudden and unexpected change. Death happens to everyone, no matter who you are, how much money you have, where you live, or what color your skin is. So, the Death card can be a sign that you may feel as though you are caught in the path of sweeping change and cannot escape its effects. Though, this massive change could bring with it a series of unexpected surprises that create new opportunities and advantages for you.

Element: Water.

Temperance



Temperance

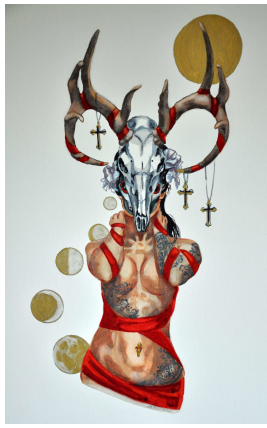
Upright: Balance, moderation, patience, purpose Reversed: Imbalance, excess, self-healing, re-alignment

Temperance is the card for bringing balance, patience, and moderation into your life. You are being invited to stabilize your energy and to allow the life force to flow through you without enforcement or resistance. Your respect for balance and tranquility is what will help you achieve and experience fulfillment in your life. Temperance asks you to take the middle path and accommodate all perspectives. There is alchemy within Temperance. This Tarot card is about blending, mixing, and combining diverse elements in a way that creates something new and even more valuable than its separate parts. The Temperance card shows you have a clear, long-term vision of what you want to achieve. You are not rushing things along. You know you need a moderate, guided approach to reach your goals. Your inner voice is guiding you to the right outcome, and you are patiently listening and following.

La Templanza: This image uses the archangel Michael and the water mixed with blood (signifying the life force) flowing between the two cups imagery, representing the mixing of the seemingly contradictory elements of spirit above and matter below. This angel is less "angelic" though and more dangerous, tough, and modern-looking.

The Temperance card resides in the element of Fire.

Devil



The Devil

Upright: Shadow self, attachment, addiction, restriction, sexuality
Reversed: Releasing limiting beliefs, exploring dark thoughts, detachment

The Devil card represents your shadow side and the negative forces that constrain you and hold you back from being the best version of yourself. Just as the Lovers card speaks to duality and choice, so does the Devil. The Devil card often appears when you have been tricked into thinking you have no control over your shadow self or these negative forces, and that you can never break free from their hold. When the Devil shows up in a Tarot reading, see it as an opportunity to bring these negative influences into your conscious awareness, so you can then take action to free yourself from their hold. Shine a light on the negative patterns that have been standing in your way. It may be a recurring pattern for you, and it will take a tremendous amount of willpower and strength to free yourself from their influence. But know it is possible, and it is up to you to make it happen. On the positive side, the Devil can also show a powerful attachment between two people, a new romance still in its 'honeymoon phase.' Be careful though, the Devil card indicates that this healthy attachment can turn into an unhealthy, co-dependent relationship if you lose connection with your inner guidance or don't protect your personal boundaries.

Instead of a typical red caped, horned figure, there is a female. She is partially hidden behind the deer skull, in shadow. She has Dia de los Muertos face paint and white flowers in her hair. She is dangerous and dark. The red bindings hint to her dark side or a possible self restriction from exploring her shadow self. The Devil card can also represent sexuality and your wild side. You may be exploring your deepest, darkest fantasies. As long as you create a safe place, with a well chosen partner, it can be a freeing and enriching experience. Accepting your humanity enables you to lift off the chains of self-hatred. How might you acknowledge the dark or un-evolved side of yourself?

Elemental:Earth

Tower



The Tower

Upright: Sudden change, upheaval, chaos, revelation, awakening Reversed: Personal transformation, fear of change, averting disaster

When the Tower card appears in a Tarot reading, expect the unexpected-enormous change, upheaval, destruction, and chaos. There's no escaping it. Change is here to tear things up, create chaos, and destroy everything in its path. Just when you think you're safe and comfortable, a Tower moment hits you and throws you for a loop. A lightning bolt of clarity and insight cuts through the lies and illusions you have been telling yourself, and now the truth comes to light. Your world may come crashing down before you, in ways you could never have imagined. You are now questioning what is real and what is not; what you can rely upon and what you cannot trust. This can be very confusing and disorienting, especially when your core belief systems are challenged. But over time, you will come to see that your original beliefs were built on false assumptions, mistruths, and illusions. With a card like the Tower, you have no choice but to surrender to the destruction and chaos, though change on this deep level is difficult. After a Tower experience, you will grow stronger, wiser, and more resilient. These moments are necessary for your spiritual growth and will bring about a positive change.

If you become too comfortable or egotistical, divine intervention (represented by lightning in this image) knocks you from your tower (with its lofty ideas and beliefs), shaking the very foundation of your beliefs. What must crumble for a better structure to be built? The Tower card shows a Mexican "Mission" style church and a skeleton, falling from the bell tower. Lightning can also represent the ideals of humanity being brought down a notch, though the Tower card doesn't always have to be associated with pain and turmoil. If you are highly aware and in tune with your inner guidance system, then this Tarot card can indicate a spiritual awakening or revelation. Before the structure comes tumbling down, you may be able to take action. In its most positive form, the Tower card is your opportunity to break free from the old ways of thinking that have been holding you back.

Elemental: Fire.

Star



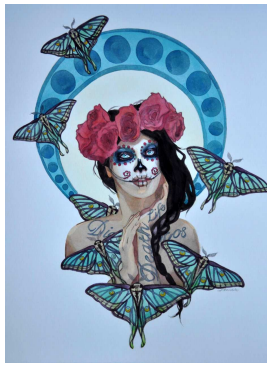
The Star

Upright: Hope, faith, purpose, renewal, spirituality Reversed: Lack of faith, despair, self-trust, disconnection

As the Star follows the Tower card in the Tarot, it comes as a welcome reprieve after a period of destruction and turmoil. The Star brings renewed hope, faith, and a sense that you are truly blessed by the Universe. You are entering a peaceful, loving phase in your life filled with calm energy, mental stability, and more in-depth understanding of both yourself and the others around you. This is a time of significant personal growth and development. You are now ready to receive the many blessings of the Universe.

The Star is meant to be our guiding light, allowing us direction, hope, and optimism. The Dia de los Muertos connection to the Star is through the entity of Spirit, a higher power or universe, faith, and belief. With the Star card, anything is possible and the magic is flowing around you. Your heart is full of hope and you realize your dreams really can come true. Allow yourself to dream, to aspire, reach for those stars! They are right here waiting for you. Her hair, feather, and moth are soft while the edges on the star and her mouth are hard. This image isn't overly pretty as life is not always so. The star is the continued hope and optimism she wants to hold on to. This card is associated with the element of Air, pure thought and intellect, fairness, synthesis, and analysis.

Elemental: Air



La Luna, The Moon

Upright: Illusion, fear, anxiety, subconscious, intuition Reversed: Release of fear, repressed emotion, inner confusion

The Moon is the card of intuition, dreams and the unconscious. The moon provides light as a reflection of the sun, yet this light is dim, uncertain, and only vaguely illuminates our path as we journey toward higher consciousness. The Moon often represents your 'shadow self.' The shadow is a part of the unconscious mind, consisting of repressed weaknesses, shortcomings and instincts. Oftentimes, the Moon appears in a reading when you are not sure of your destination, or even of the path you are traveling, but you travel nonetheless. You may have lost your way and are now left to walk in the dark, guided only by your inner light and intuition. The card often shows up when you need to pay attention to your dreams. Whatever happens, do not need it to make sense. Your guide should be more of a feeling. Turn off your intellectual self. Logic and practicality need to step back, and allow your personal, emotionally true self to take the lead for awhile.

The Moon card indicates that you might be in the dark about some critical issues and that you need to stop seeking advice from external sources. Self-confidence, intuition, persistence-you need to do the work to hone these instincts within yourself so that you can listen and learn from your own voice.

In this image you can see while her face is painted in the customary Día de los Muertos skull, her body remains alive with skin tones: she is neither skeleton, nor dead. She lingers between the two realms. The tattoos on her shoulders overtly represent her choice to be made. The moth is a further indication of night, an embodiment of the soul. Moths follow the mother moon as the light to clarity and truth. Our thinking, dreaming, and planning is done under the veil of the moon. We rejuvenate under the glow of the moon. We find strength here so as to be our truest selves and continue our work upon daybreak.

Sun



The Sun

Upright: Positivity, fun, warmth, success, vitality Reversed: Inner child, feeling down, overly optimistic

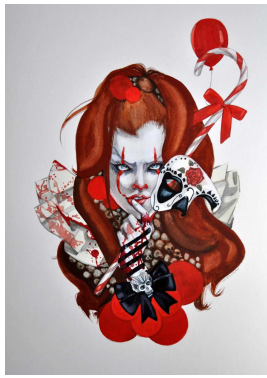
The Sun represents success, radiance and abundance. The Sun gives you strength and tells you that your positive and radiant energy will follow you. People are drawn to you because you always see the bright side and bring warmth in to other people's lives. This beautiful, warm energy will get you through tough times and help you succeed. You are also in a position to share your highest qualities and achievements with others. You are full of energy and zeal for the future and can already perceive success and abundance flowing to you.

A symbol of self knowledge, awareness, and realism, the Sun indicates increased strength and self awareness-obstacles have been overcome. You are at a point where an accomplishment should be celebrated or you are finding joy in the beauties of life. The image for the Sun is a blending of a 'pin-up' female figure with an Aztec and Mayan feather ceremonial dress (a nod to Dia de los Muertos imagery), making a very stylized portrayal of the Sun, or life force.

The Mayans had many gods, including a sun god. Kinich Ahau (pronounced K'inich Ajaw) was the 16th-century Yucatec name of the Mayan sun god. Kinich Ahau was the patron of one of the four years of the 52-year cycle (Landa). In the rituals introducing this year, war dances were executed. Kinich Ahau was apparently considered an aspect of the upper god, Itzamna. He may conceivably be related to the patron deity of Izamal, Kinich Kakmo or 'Fire Parrot', who was reported to descend to earth while the sun was standing in the zenith in order to consume offerings (Cogolludo).

The Sun is also an energetic card. It reflects a time when you can expect to experience an increase in physical energy, vitality, and general positivity. You are bursting with enthusiasm, invigorated and enjoying a wonderful sense of good health.

Judgement



Judgement

Upright: Judgement, rebirth, inner calling, absolution Reversed: Self-doubt, inner critic, ignoring the call

The Judgement card often indicates that you need to make a life-changing decision, and this decision requires a blend of intuition and intellect. You may be at a crossroads, aware that any choice you make will bring a significant change. Tune in to your higher self, trust your judgement, and know you are on the right path. If you still need clarity on the situation, look to your past life lessons to guide you. Judgement comes up in a Tarot reading when you are close to reaching a significant stage in your journey. You have learned from your past experiences and you are now able to put the past behind you. You have found your absolution, having cleared any wrongdoings or regrets and releasing any guilt or sadness about the past.

The close-up of a Dia de los Muertos painted face relates that in death, we will all face some sort of judgment. Can you see the Judgement in her accusatory green eyes? What sins are hiding from your past? Or is it self judgement that you need to free yourself from? The Judgement card suggests that you may find comfort in sharing your struggles with others. There will be others who have experienced something similar and who can show you the way to freedom from your troubles. Let them help guide you.

The Judgment card is charged with the element of Fire.



The World - El Mundo

Upright: Completion, integration, accomplishment, travel Reversed: Seeking personal closure, short-cuts, delays

The world is completion. The last card in the Major Arcana, you're at the end of a long journey. This card is an indication of acceptance and satisfaction. You have done the work and can now look out upon the view. The World is about the outside view, the outer contemplation, after a kind of inner culmination. You have achieved a goal and now must integrate the result as your own. There is no need to prove yourself. You have come to know your self-worth. There should be no urge for attainment. You have arrived and stabilized yourself. You have the realization that the power is in your hands. The World card expresses certainty, completion, positive energy, reward, and satisfaction. It reveals major, resolute change.

The World card indicates the cyclical nature of life and a progression through these cycles. The female stands on air above the world. She is above and below, able to step into consciousness at will. She is between Heaven and Earth with an all-knowing look in her eyes that shows her wisdom gained through life's experiences. She asserts our bond of giving back to the world, sharing what we have learned and gained. She is almost nestling the world. This is a reciprocal relationship. One in which the difficulties feed the successes. The female breathes the sweet scent of success which surrounds and highlights her. In turn, she reflects this success upon the world.

A female Dia de los Muertos style portrait shows a woman's face high above the air, indicating your consciousness, with a look of knowing. The Earth-the rest of humanity-nuzzled below her, ready for her sharing of wisdom. She has come to know herself fully, through life's lessons. This earth element card indicates that we are at the end of an instructive phase and are now entering a practice stage. It is heavy and light. It has gone through us. We have incorporated it. It is complete.