

### Ace of Swords

Upright: Breakthroughs, new ideas, mental clarity, success Reversed: Inner clarity, re-thinking an idea, clouded judgement

Ace of Swords brings new energy from the intellectual realms. You may be on your way to a new way of thinking or intellectual potential. Or perhaps you can finally see the path ahead of you with a sudden realization or conscious understanding about an issue that has been troubling you. You are open to embracing new ideas or to learning something new. Now is an excellent time to start a new project-one that requires your intellect, communication skills, and mental power. Ace of Swords also encourages you to pursue the truth of the matter and to find justice. You may champion a cause or stand up for your rights or the rights of others. Or you may have a new idea for which you are prepared to fight. You have great clarity on the situation and can now argue your point of view with truth and conviction. In other words, you are ready for battle.

Ace of Swords has a white skull, a Mexican-styled dagger representing the sword, and traditional Dia de los Muertos ceremonial marigolds. Death is alluded to as a new beginning. In general though, this image is mostly a traditionally-styled Tarot Ace. White is indicative that this card is under the Air element.

The element of Air is attached to the signs Gemini, Libra and Aquarius. It is rarefied air which usually surrounds those graced by this element, as this is the marker of the intellectual. Airy people are smart thinkers and handle abstract reasoning well. They love to analyze, synthesize and probe. Those influenced by Air are inventive and clever. They see all sides of the equation and are able to glean the best approach. Balance is key. Air signs are communicative, intellectual, clever and fair.

Zodiac: Gemini, Libra, Aquarius Element: Air Color: White

## Two of Swords



### Two of Swords

Upright: Difficult decisions, weighing out options, an impasse, avoidance Reversed: Indecision, confusion, information overload, stalemate

Two of Swords indicates that you are facing a challenging decision, but you are unclear about which option to take. You must be able to weigh out the pros and cons of each choice and then make a conscious judgment. Use both your head (your mind and intellect) and your heart (your feelings and intuition) to choose the path that is most in alignment with your Higher Self.

The woman in this card wears a blindfold, indicating that she cannot see the entirety of her circumstance. You may lack the information you need to make the right decision. You may be missing something, such as the threats or potential risks, alternative solutions. Or are you purposely "blindfolded in avoidance or a situation?" Once you remove the blindfold and see the situation for what it really is, you will be in a much better position to find your best path forward. (Editor Note: the "sword" here is a Mexican-style dagger, though this image mostly has a traditional Tarot interpretation.)

Expressive and quick-witted, Gemini are fascinated with the world itself and are extremely curious. Gemini represents two different personalities in one, and you will never be sure which one you will face. They are sociable and communicative, with a tendency to suddenly get serious, thoughtful, or restless.

Zodiac: Gemini Element: Air Color: White

## Three of Swords



### Three of Swords

Upright: Heartbreak, emotional pain, sorrow, grief, hurt Reversed: Negative self-talk, releasing pain, optimism, forgiveness

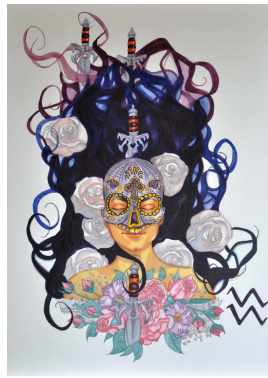
When Three of Swords turns up in a Tarot reading, it signals that you are feeling deeply hurt and disappointed. Your heart has been pierced by the sharp blades of other's hurtful words, actions, or intentions, inflicting intense pain, sadness, grief, and heartbreak. These events are often unexpected and come out of the blue, making them even more painful. Three of Swords is also about an emotional release. Expressing your sadness is part of the cleansing process. Allow yourself the opportunity to experience these emotions, no matter how painful. If your focus stays locked on the damage, now is the time to accept what happened and move forward with your life. Three of Swords comes as a reminder that pain, sorrow, and grief are a necessary part of life. Every hardship creates discomfort which inevitably turns into an opportunity to become stronger, learn from your mistakes, and change the course of your life for the better.

This image shows the portrait of a sad, female face in the traditional Dia de los Muertos makeup paint. A single, white ceremonial rose is in her hair for remembrance. A broken/cracked steam-punk styled "heart" clock represents both the passage of time as well as her broken heart, with three Mexican-styled daggers piercing through it-perhaps the "death" or betrayal of a relationship. (Editor note: mostly traditional interpretation of the Tarot with some Dia de los Muertos symbolism.)

Libra individuals are fascinated by balance and symmetry. They are in a constant chase for justice and equality. They are aware that things pass, and so they teach us to be careful around other people. Libras are symbolized by the scales of justice. When you forgive, you can then move forward. Though don't forgive and forget. You must remember so you can learn. Balance will return.

Zodiac: Libra Element: Air Color: White

## Four of Swords



### Four of Swords

Upright: Rest, relaxation, meditation, contemplation, recuperation Reversed: Exhaustion, burn-out, deep contemplation, stagnation

Four of Swords tells you to rest before you take on your next challenge. You must recharge your energy before the next phase begins. Even if you are highly productive and driven, take time out from your schedule to restore your energy and heal the body and the mind. If you have been going through tough times recently, such as the trauma of a broken relationship or family problems, financial or health worries, stress or conflict, then Four of Swords comes as a sign to take a step back and regain perspective. Stay silent and inactive, or spend some much needed time with your loved ones. Spend time in a place that creates peace, calm, and tranquility for you. You need to replenish your strength and spend time connecting with your Higher Self. Four of Swords can also suggest the need for seclusion. You need solitude to negotiate your situation and time apart from others to gather your thoughts and feelings. Solitary experience can bring a greater inner strength and confidence.

A dark-haired beauty is resting, eyes closed and hair fanned out around her. Is she asleep? Or in eternal rest within her coffin, weary from life and its challenges? Once rejuvenated, will she take up her swords, rising again, ready to do battle? She wears a Dia de los Muertos, skull-styled "mask," symbolizing her separation from others and giving her a sense of solitude and peace. She is recharging after the heartbreak/betrayal from the previous challenge-found in Three of Swords. She cradles one Mexican-styled dagger at the ready, while the others with ceremonial roses are tucked throughout her hair as she rests. Yes, she will rise again!

Aquarius-born are shy and quiet, but on the other hand they can be eccentric and energetic. In both cases, they are deep thinkers and highly intellectual people. Aquarius can have tendencies of running from emotional expression and appearing uncompromising and aloof. Aquarius-born have a deep need to be alone and away from everything in order to restore power.

Zodiac: Aquarius Element: Air Color: White

## Five of Swords



### Five of Swords

Upright: Conflict, disagreements, competition, defeat, winning at all costs Reversed: Reconciliation, making amends, past resentment

Five of Swords turns up when you have had a falling out, disagreement, or conflict, and you are walking away with a sense of sadness and loss. You may be upset and resentful. Even if you won the argument or came out the apparent victor, you realize that you have lost as much as (or more than) your opponent. This battle has cost you trust, respect, or dignity, and isolated you. Five of Swords can often indicate that you are competing with others on the path to success. You see them as threats to your own happiness, and so you seek to win at any cost. Five of Swords may also point to failure. It shows that despite your best efforts, you are likely to be beaten or come out as the loser. If you allow yourself to become disillusioned after such a loss, then you will find yourself on the path to increased ruin and torment. Accept your defeat, and learn from it. Be smarter and wiser next time.

Three purple half skulls (a nod to Dia de los Muertos) rim a steam-punk style frame and a clock underneath. There are five white, Mexican-style daggers with an eye in the middle, representing conflict, tension, loss, defeat, win at all costs, and betrayal. She is weeping from her hurt/dismay at the conflict and feels isolated. Time is a representation of her ambition, and in this case, time is her opponent. Trying to manage time of what she wants (success) versus others and their needs and wants. (Editor: this interpretation is mostly traditional, with Dia de los Muertos symbolism.)

Zodiac of Libra represents the "balance" she is searching for while achieving her goals. People born under the sign of Libra are peaceful, fair, and they hate being alone. Partnership is very important for them. These individuals are fascinated by balance and symmetry. They are in a constant chase for justice and equality. This is someone ready to do nearly anything to avoid conflict, keeping the peace whenever possible.

Zodiac: Libra Element: Air Color: White

## Six of Swords



### Six of Swords

Upright: Transition, change, rite of passage, releasing baggage Reversed: Personal transition, resistance to change, unfinished business

Six of Swords shows that you are in a state of transition, leaving behind what was familiar and moving towards the unknown. You might be moving out of a house, leaving a relationship, changing jobs, going through a rite of passage or a mental shift. This change may be your own doing or forced upon you, and you may feel sad to leave behind what is so familiar to you. However, you know this move is essential for your growth and personal development. Six of Swords invites you to let go of whatever is holding you back-your past or your present circumstances. Instead, look ahead to your future and choose the way most in alignment with your Highest Good and long-term potential.

Similarly, Six of Swords asks you to reflect on any emotional or mental baggage you may carry. In the boat are six upstanding swords, or Mexican daggers-and three ravens/crows which represent death (a nod to Dia de los Muertos). Whether an actual physical death/grief or ending/change, Six of Swords is a sign you are still carrying a heavy weight from your past as you move forward, which might slow your personal growth.

The biggest problem for Aquarius-born is the feeling they are limited or constrained. In Six of Swords there is a regretful but necessary transition, a rite of passage. Aquarius dislikes limitations, broken promises, being lonely, or people who disagree with them. These 'swords' may be grief, memories, relationships, habits, behaviors, thought patterns or beliefs that are no longer serving you. Decide what you need to take with you and what you can leave behind.

Zodiac: Aquarius Element: Air Color: White

## Seven of Swords



### Seven of Swords

Upright: Betrayal, deception, getting away with something, acting strategically Reversed: Imposter syndrome, self-deceit, keeping secrets

Traditionally, Seven of Swords indicates theft, betrayal, deception, and trickery. You may be trying to get away with something, hoping to go undetected. Alternatively, you may be the victim of someone else's betrayal. You may be unaware of their lies and deception. You may trust someone who then turns out to be running their own agenda. Listen to your intuition when something does not feel right or seems too good to be true.

In Seven of Swords, there are seven white, Mexican daggers (swords), a figure in a mask and cloak of "deception," and her bleeding anatomical heart (a subtle nod to Dia de los Muertos). This heart shows her possible regret at the deception. Seven of Swords could also imply that you are trying to escape from a situation that is not working for you anymore, rather than dealing with it head-on. You may attempt to run away from commitment, responsibility, hard work, or love. You may procrastinate because you do not want to deal with them.

Aquarius tends to run from emotional expression. Aquarius-born have a reputation for being cold and insensitive personalities, but this is just their defense mechanism against premature intimacy. They need to learn to trust others and express their emotions in a more open way. Sometimes, you just have to face what has to be faced.

Zodiac: Aquarius Element: Air Color: White

## Eight of Swords



### Eight of Swords

Upright: Negative thoughts, self-imposed restriction, imprisonment, victim mentality Reversed: Self-limiting beliefs, inner critic, releasing negative thoughts, open to new perspectives

Eight of Swords reveals that you feel trapped and restricted by your circumstances. You believe your options are limited with no clear path out. When Eight of Swords appears in a Tarot reading, it comes as a warning that your thoughts and beliefs are no longer serving you. You may be over-thinking things, creating negative patterns, or limiting yourself. Eight of Swords is often associated with a victim mentality. You have surrendered your power to an external entity, allowing yourself to become trapped and limited in some way. You may feel like the victim, waiting to be rescued, but is this energy serving you? It is imperative for you to take back your power and personal accountability and open your eyes to the options in front of you. The fact is you do have choices. You are not powerless. As you change your thoughts, you change your reality. Replace negative thoughts with positive ones, and you will start to create a more favorable situation for yourself. Be open to finding the answer rather than getting stuck on the problem.

Eight of Swords has a traditional Tarot image with subtle Dia de los Muertos imagery—a rib cage and anatomical heart and flowers. She (her heart) is imprisoned/restricted by the swords/rib cage/bindings on her arms and blindfold across her eyes. Her limitations are self-imposed, afraid of being hurt. Again, this card is asking you to get out of your head and drop down into your gut and intuition so you can hear your inner guidance. Your thoughts are not serving you right now, but your intuition is. Trust yourself. Meanwhile the butterfly and flowers also represent hope. Look closer: the woman in the card is not entirely imprisoned by the eight swords around her. If she wanted to escape, she could. She merely needs to remove the blindfold and free herself from the self-imposed bindings that hold her back.

The Gemini zodiac is tattooed on her hand representing her negative aspects. At times Gemini is nervous, inconsistent, indecisive, with a tendency to suddenly get serious, thoughtful, and restless (trapped). Libra is tattooed on her forehead representing her intuition and positive thought. Libra is one dot of balance in the sea of different extremes. Whatever we do in our lifetimes only serves to point the way for our souls towards that "higher power" to finally measure our existence. Telling us where we went wrong or what we did right, Libras unconsciously teach us that true liberation hides in lightness.

Zodiac: Gemini, Libra Element: Air Color: White



## Nine of Swords



### Nine of Swords

Upright: Anxiety, worry, fear, depression, nightmares Reversed: Inner turmoil, deep-seated fears, secrets, releasing worry

Nine of Swords suggests that dark thoughts and disturbing feelings are weighing you down and keeping you up at night. You are worrying excessively, and your negative thoughts are leaving you stressed and anxious. It becomes a negative cycle where one awful thought leads to another, until you are overwhelmed. Be careful that the fear and worry in Nine of Swords do not become a self-fulfilling prophecy. As you obsess over what may go wrong, you are more likely to manifest your worst-case scenario because you supporting your negative thoughts. Nine of Swords reminds you that much of the fear and worry you are experiencing is in your head and not an accurate reflection of what is happening around you. It is time to examine your situation from a new perspective. Nine of Swords often crops up when worry, despair, and anxiety are quite literally keeping you up at night. You may be experiencing frequent nightmares. Your constant thoughts are preventing you from resting and repairing.

Nine of Swords has traditional Tarot imagery but with a modern take. Nine Mexican-style daggers (or swords) form the headboard of her bed, all the thoughts are in her head, rather than reality. The woman is restless. Flying butterflies represent her mind, weighed down by negative thoughts, nightmares, and dreams. Some are beautiful, while others are disturbing. The skulls (for Dia de los Muertos) represent the darkness of some of those nightmares and the inner turmoil she is experiencing.

Aquariuses are deep thinkers and highly intellectual people which can also lead to the negative effects of over-thinking and worrying. Let go of your fear and worry. What you are experiencing is in your head and not an accurate reflection of what is happening around you.

Zodiac: Aquarius Element: Air Color: White



### Ten of Swords, Diez de Espadas

Upright: Painful endings, deep wounds, betrayal, loss, crisis Reversed: Recovery, regeneration, resisting an inevitable end

Ten of Swords usually symbolizes a sudden and unexpected failure or disaster that crushes you without warning or mercy. Most times this situation is out of your control. This card can also indicate a time when you have been backstabbed or betrayed by someone you thought you could trust. Ten of Swords indicates a difficult experience of endings, loss, pain or release. This can be in the physical or the metaphysical body. However, the saving grace is that you have a new awareness. Soon the pain will be over and will evolve into something new. As with all endings, there will be a new beginning—a rebirth and a rejuvenation of the spirit. You need to surrender yourself in order to start anew.

In the Tarot Muertos, Ten of Swords shows bones painted on her back and shoulder, forming her backbone or spine. She has been betrayed or stabbed in the back with the Mexican-styled daggers or swords. She is forced to come to terms with her situation. On her face, she has an accusatory look of pain as she gazes back over her shoulder. The two rib cage-shaped hearts, one trapped in a bird cage and one on her sleeve, indicate a broken heart. But the door to the cage is open, representing hope. The flying sparrows circling, representing her soul, illustrate her longing to be set free and to experience release.

The Zodiac sign of Libra interplays with this card. The Libra symbol of the scales lies over her "broken heart" which she wears on her sleeve. Intelligent, kind, and always willing to put others before themselves, Libras value harmony in all forms. Libra, attached to the element of air, is justice and balance seeking. The color white indicates an inherently pure intent: clarity, possibility, protection, and beginnings. Be on the lookout for ways to fold these things back into your life.

Zodiac: Libra Element: Air Color: White

## Daughter of Swords



### Daughter of Swords

Upright: New ideas, curiosity, thirst for knowledge, new ways of communicating  
Reversed: Self-expression, all talk and no action, haphazard action, haste

Daughter of Swords is full of energy, passion, and enthusiasm. When this card shows up in a Tarot reading, you are bursting with new ideas and plans for the future. Daughter of Swords often emerges when you are exploring a new way of thinking—a new idea, a new perspective, new knowledge, or a new technique. You have a curious mind and a thirst for knowledge. You have so much energy that you feel as though you could do almost anything! As with all Daughters, the beginning always looks promising; the challenge, however, is to follow through.

Perception, truth, intellectual discovery, inspiration  
Daughter of Swords is a portrait in traditional Dia de los Muertos paint. A young female looking for perception, truth, intellectual discovery, and inspiration stands with her Spanish/Mexican-style fan and a Mexican dagger or sword and the sign of Libra behind her. This image evokes the juxtaposition between light and dark.

Libras are represented by the scales of justice. The sign of Libra is an Air sign, set between Gemini and Aquarius, giving these individuals constant mental stimuli, strong intellect and a keen mind.

Zodiac: Libra Element: Air Color: White

## Warrior of Swords



### Warrior of Swords

Upright: Ambitious, action-oriented, driven to succeed, fast-thinking Reversed: Restless, unfocused, impulsive, burn-out

As with all Warriors of the Tarot deck, Warrior of Swords is a man (or woman) on a mission. And as a Swords card, this Warrior actively uses the power of his intellect to achieve his goals. When Warrior of Swords appears in a Tarot reading, it is a sign that you are highly driven, ambitious, and action-oriented. You are so highly motivated to succeed that you will stop at nothing to pursue your dreams. The challenges, difficulties, and obstacles on the path ahead don't faze you because you know where you want to go. Warrior of Swords also represents your need to understand the world from an intellectual point of view. Move forward with strength and determination to make things happen. Warrior of Swords wears an Aztec skull headdress, face paint, and chest/hands paint. He is ready for battle—be it actual or intellectual. Different colored eyes and his half-painted face represent the dark and light side/parts of him. On the positive side, this card shows great ambition, determination, and strength to succeed no matter what. On the negative side, however, he can be blind to potential challenges and consequences of his actions, and may charge forth into a dangerous territory without any foresight or preparation.

Symbolized by the scales of justice, Libra epitomizes balance and fairness. This sign's influence helps restore equilibrium to all affairs, no matter how big or small. Libra is one of the three Zodiac signs ruled by the Air element. The other two Air signs are Gemini and Aquarius. But Libra is no gale force—this sign brings the winds of change in a more mild and moderate way. The essence of Air is communicative, intellectual, and aids the spread of ideas.

Zodiac: Libra Element: Air Color: White

## Queen of Swords



### Queen of Swords

Upright: Independent, unbiased judgment, clear boundaries, direct communication  
Reversed: Overly-emotional, easily influenced, bitchy, cold hearted

Queen of Swords combines the mental clarity and intellectual power of the suit of Swords with the maturity and receptiveness of the Queen. You have the gift of using your intellect and unbiased judgment. You lead from the head and not the heart. You are better able to discern situations without the influence of emotion or sentimentality. You may believe that empathy or compassion towards others will distract you from the task at hand. Queen of Swords notes that you are a truth-seeker. You connect with other people through an intellectual understanding rather than an emotional one. Queen of Swords suggests you have an innate ability to tell it like it is. People do not mess with you, not because you threaten them or inflict violence, but because you set expectations up front about how you want to be treated. You are a quick thinker and highly perceptive, piercing through the noise and confusion to get straight to the point. Queen of Swords emotes an air of intellect, power and danger.

Queen of Swords is a modern, edgy-looking woman. She has tattoo sleeves on her arms, black leather "hot pants," and fishnet stockings. She holds a Mexican-style dagger. She does not fear the sword or her black leopard companion. Although her eyes are cast downward, suggesting sadness at her separation/loneliness, she is comfortable in her own skin-as any true Queen should be.

Libra's strengths are diplomacy, graciousness, fair-mindedness, and sociability. Her weaknesses are indecisiveness, avoiding confrontations, carrying a grudge, and self-pity. Libra dislikes violence, injustice, loudmouths, and conformity. People born under the sign of Libra are peaceful, fair, and hate being alone. They seek balance and symmetry. They are in a constant chase for justice and equality. Queen of Swords notes that you are a truth-seeker. You are open to hearing the thoughts and opinions of others, but ultimately you filter that information to decipher what is true and what is not. When interacting with others, you will not tolerate mis-truths. You prefer to get to the heart of the matter without engaging in chit-chat or gossip.

Zodiac: Libra Element: Air Color: White

## King of Swords



### King of Swords

Upright: Mental clarity, intellectual power, authority, truth  
Reversed: Quiet power, inner truth, misuse of power, manipulation

King of Swords is a symbol of intellectual power and authority and has the courage and intellect to achieve all that he desires. When this card appears in a Tarot reading, you are in your power, ruling from a place of authority and respect. You stand firm in your truth and express yourself with deep conviction. King of Swords encourages you to use your logic and intellect to navigate the path ahead. You will need to make firm and well-researched decisions and stay fair in your dealings with others. You need to be able to take a situation, look at it with total impartiality, and then come to a balanced and insightful decision.

King of Swords, a handsome and stylish Mexican man, exudes intellect, power, courage, judgment, and command. In the background, there is a large sugar skull, or ofrenda. King of Swords offers up his idea or advice, "La calavera es un simbolo de la muerte, lo unico seguro en la vida." or "The skull is a symbol of death, the only sure thing in life." He holds a Mexican-style dagger. King of Swords encourages you to use your logic and intellect to navigate the path ahead.

Gemini, the sign of the Twins and the brainiac of the Zodiac, is adept at moving from group to group. They're highly intelligent, skilled at seeing a 360-degree picture of a situation almost instantaneously, and rarely become indecisive when making the next move. Ruled by powerhouse communicator, Mercury, Geminis can voice exactly what they need. Even if they hold an unpopular opinion, they have the persuasive ability to will lead people to their way of thinking.

Zodiac: Gemini Element: Air Color: White